

System Prototype and HW/SW Design

教 師：蘇 慶 龍

INSTRUCTOR: CHING-LUNG SU

E-mail: kevinsu@yuntech.edu.tw

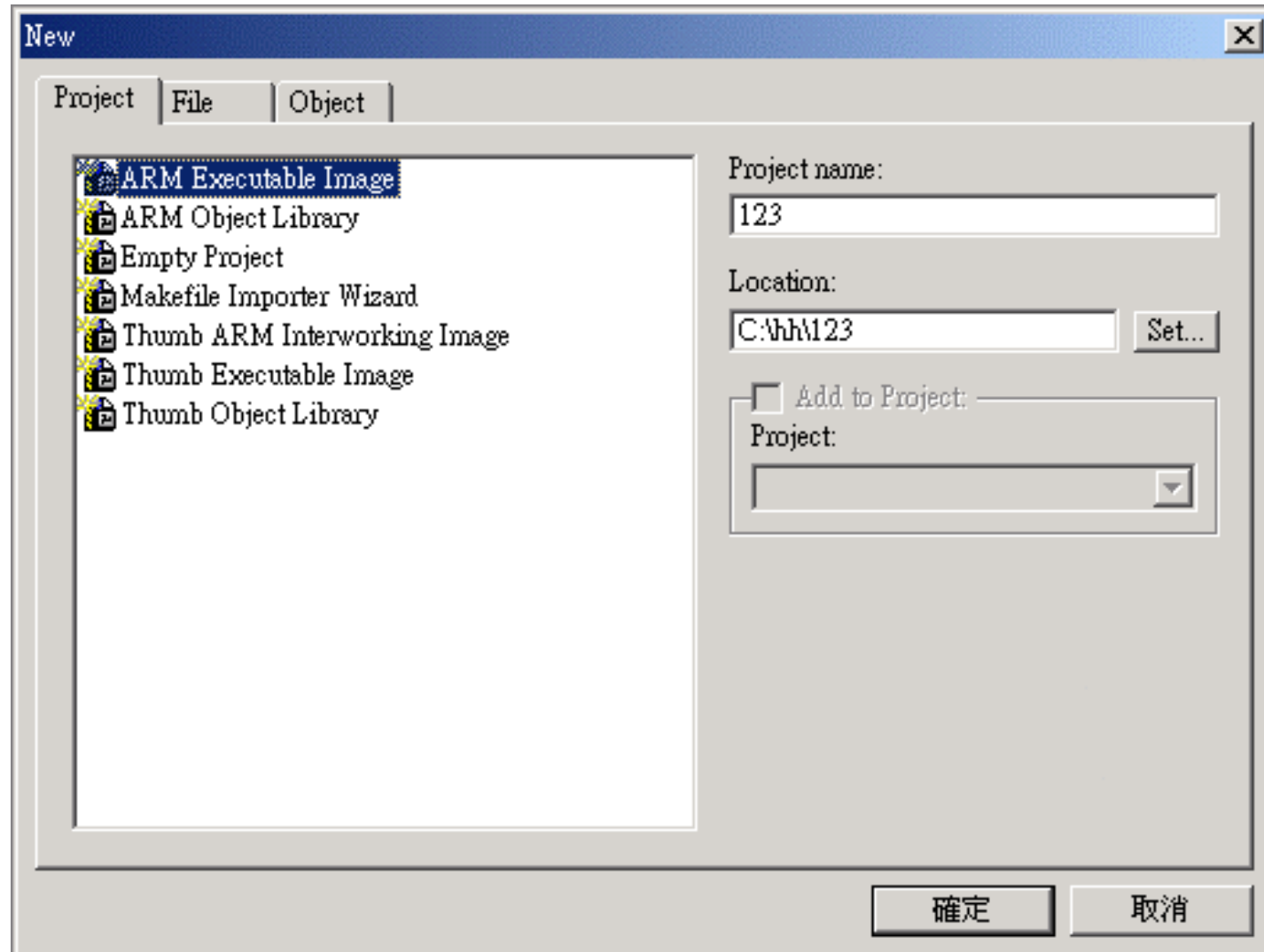


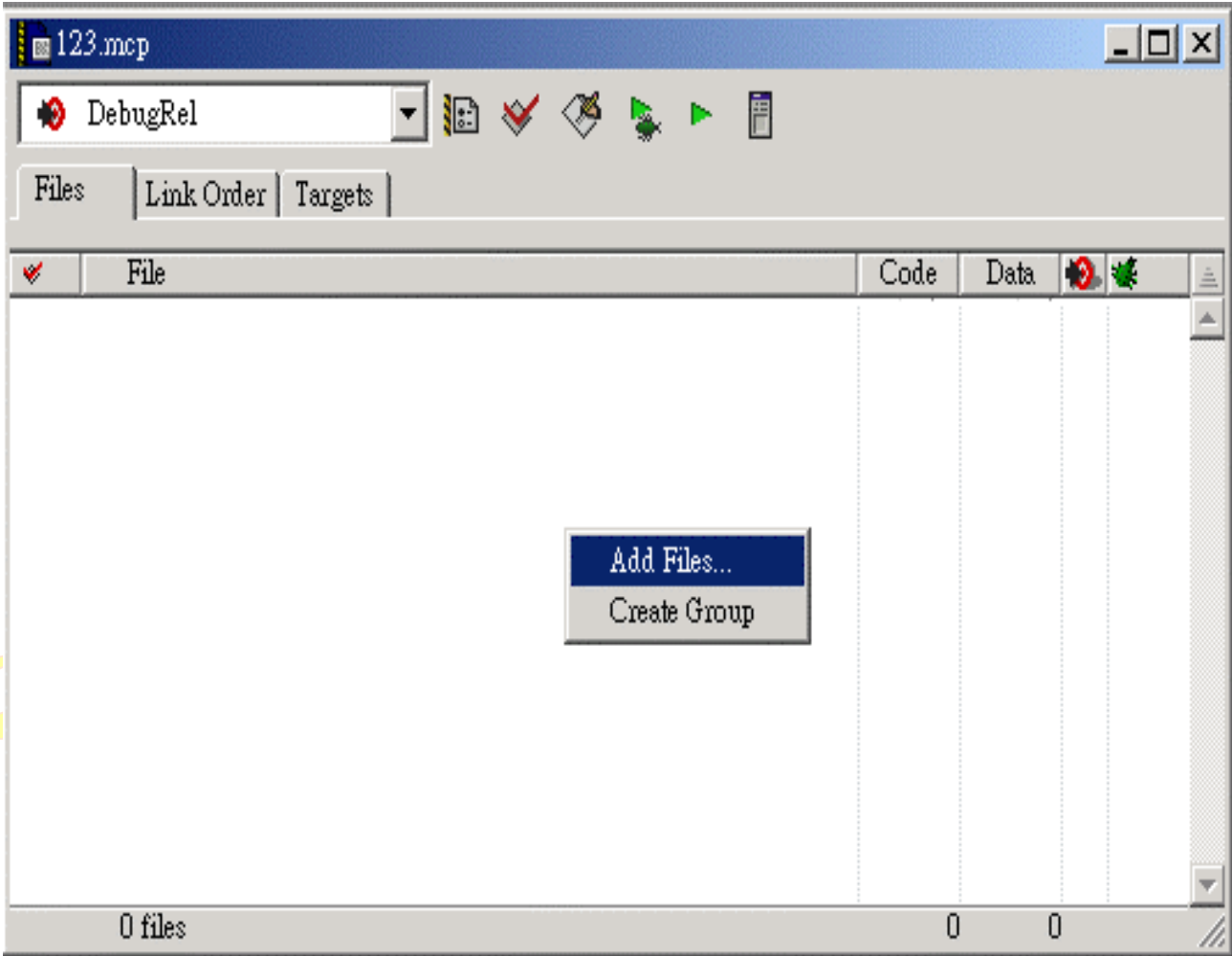
Lab. 3 Domingo 簡報

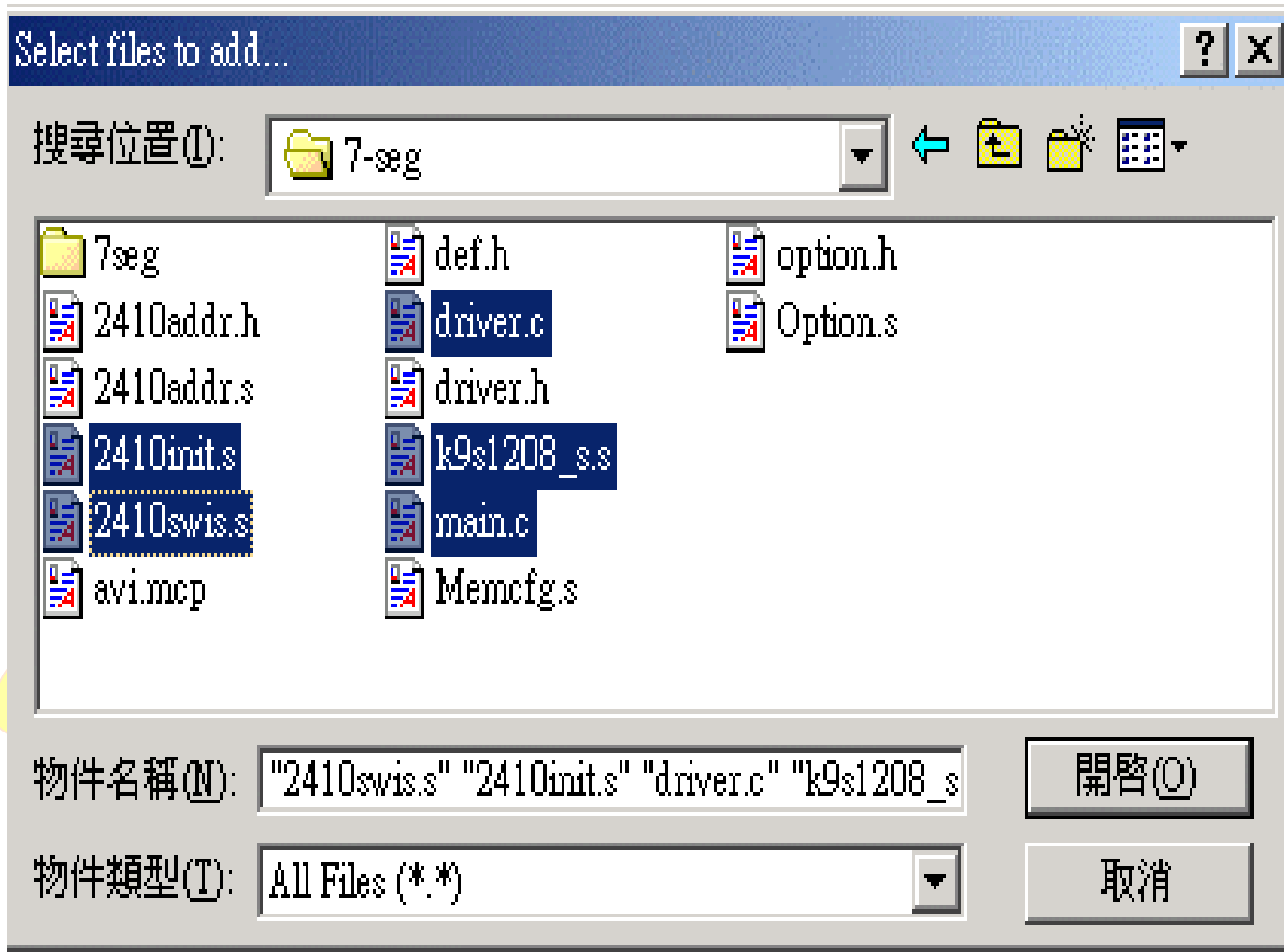
ADS建立新檔

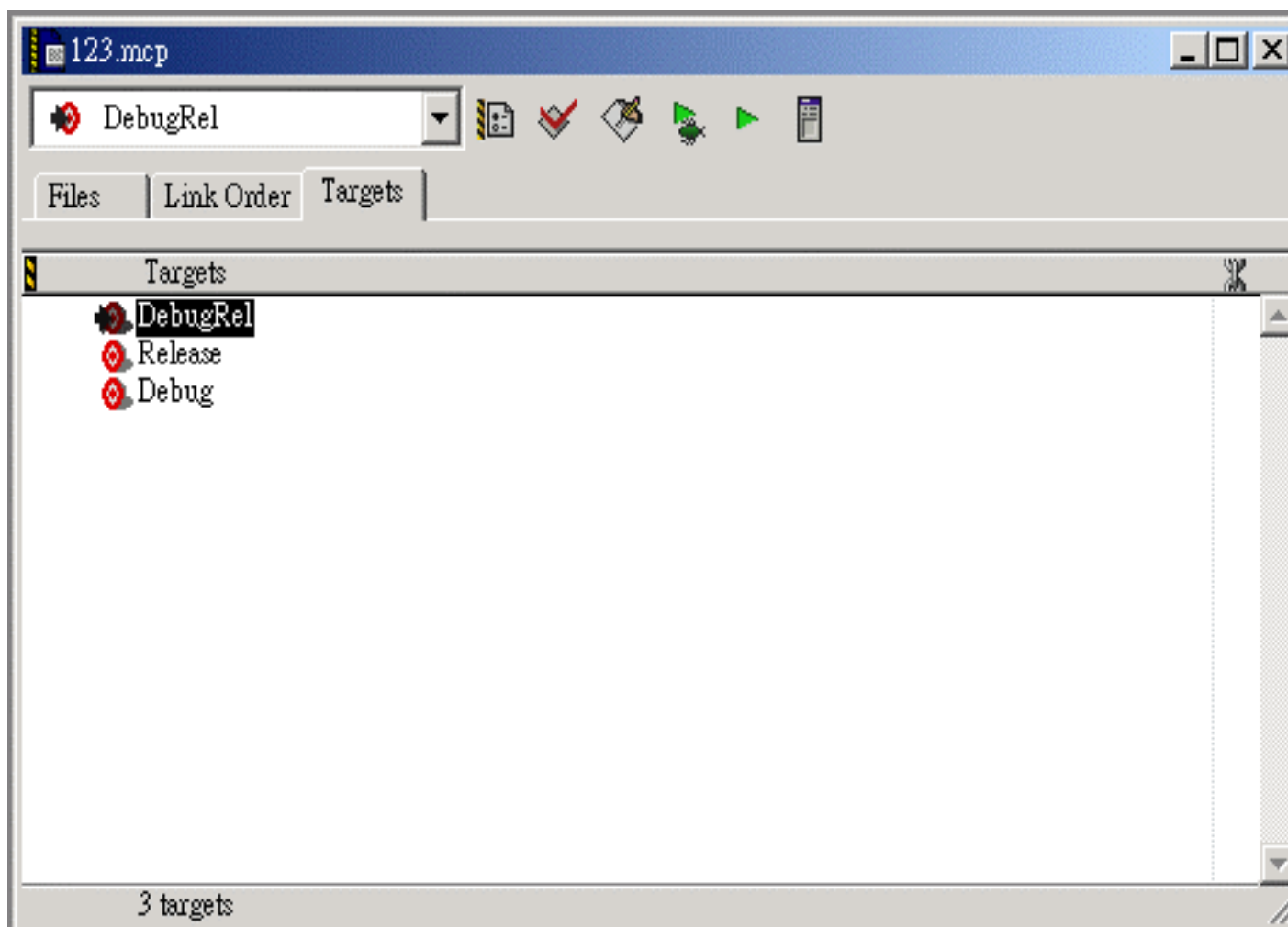
2005/5/10

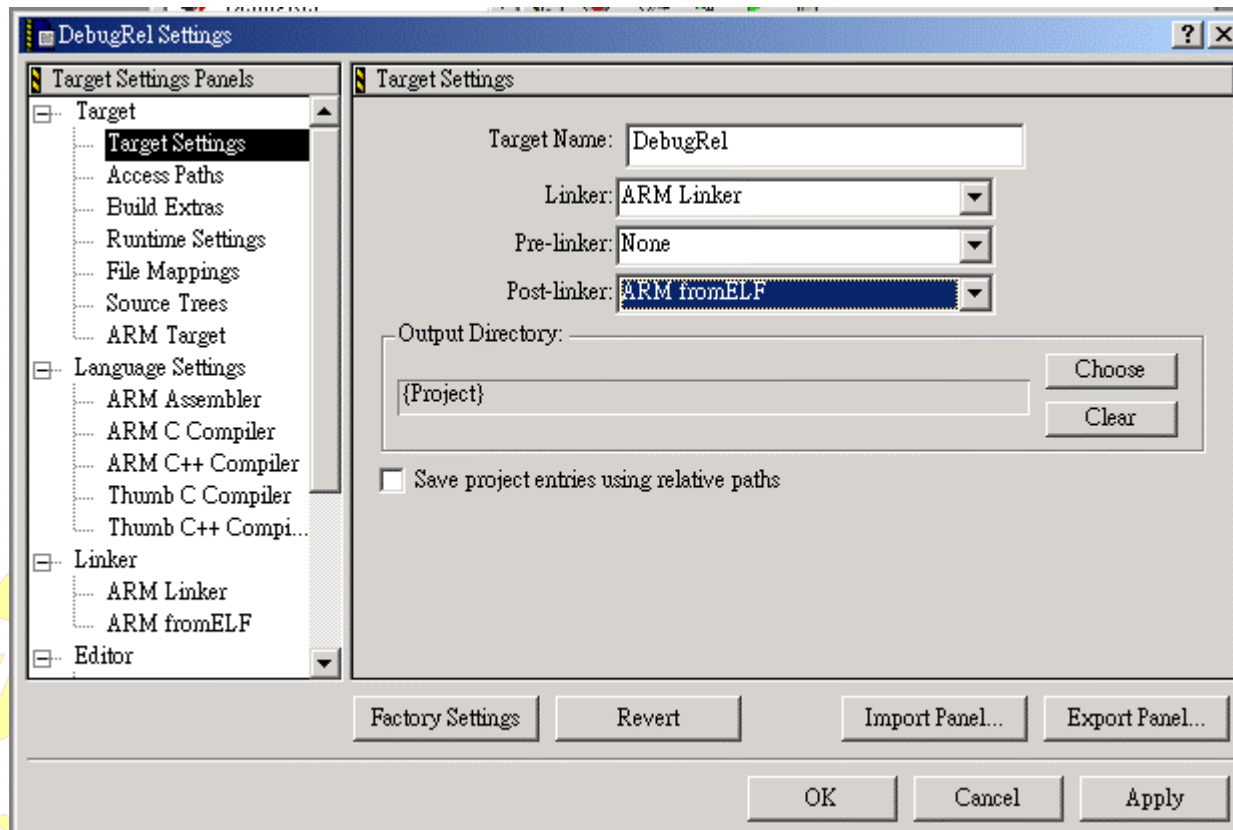
P-3/20

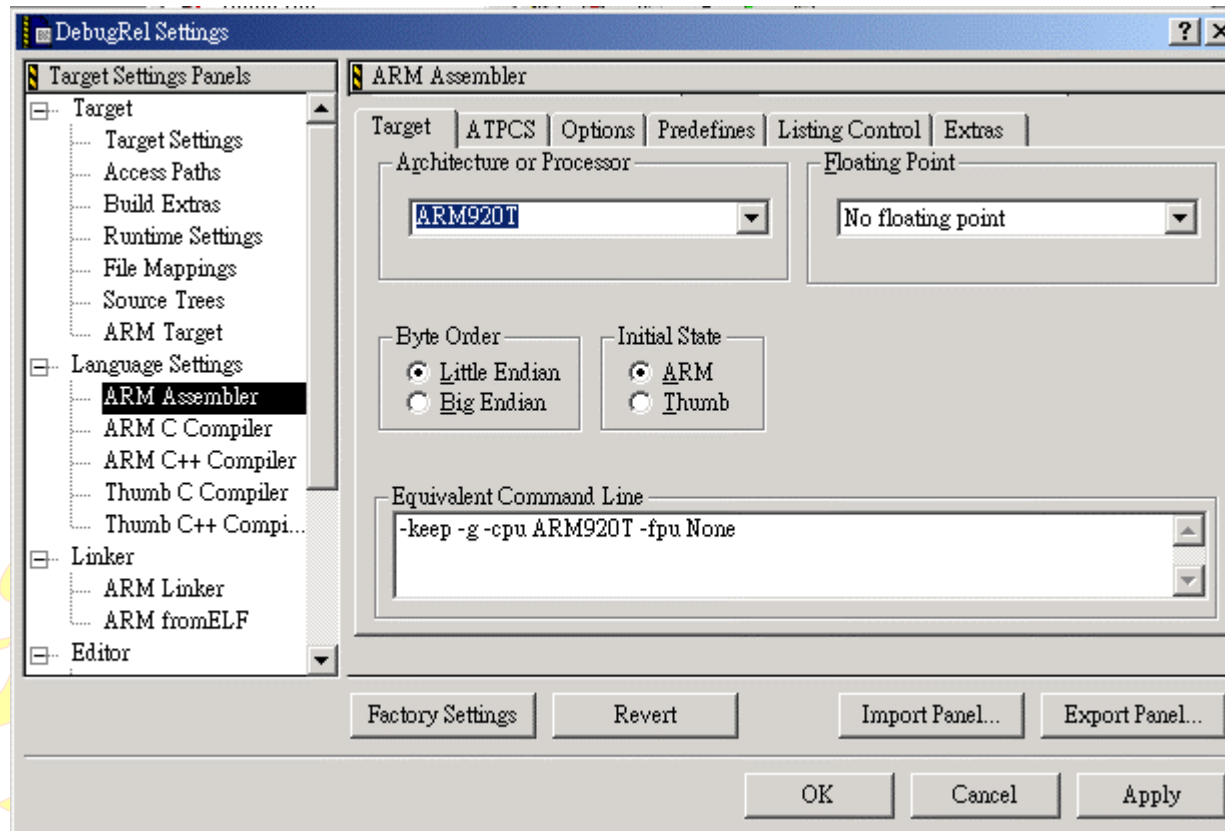


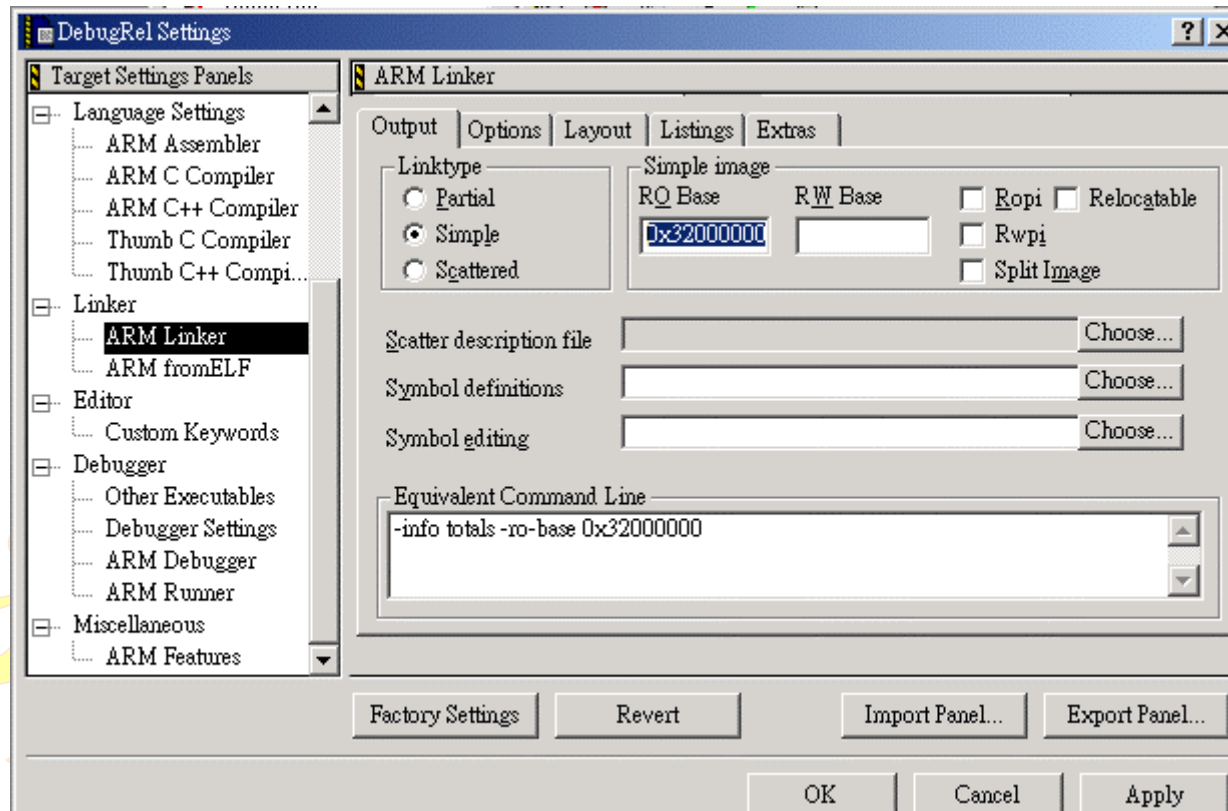


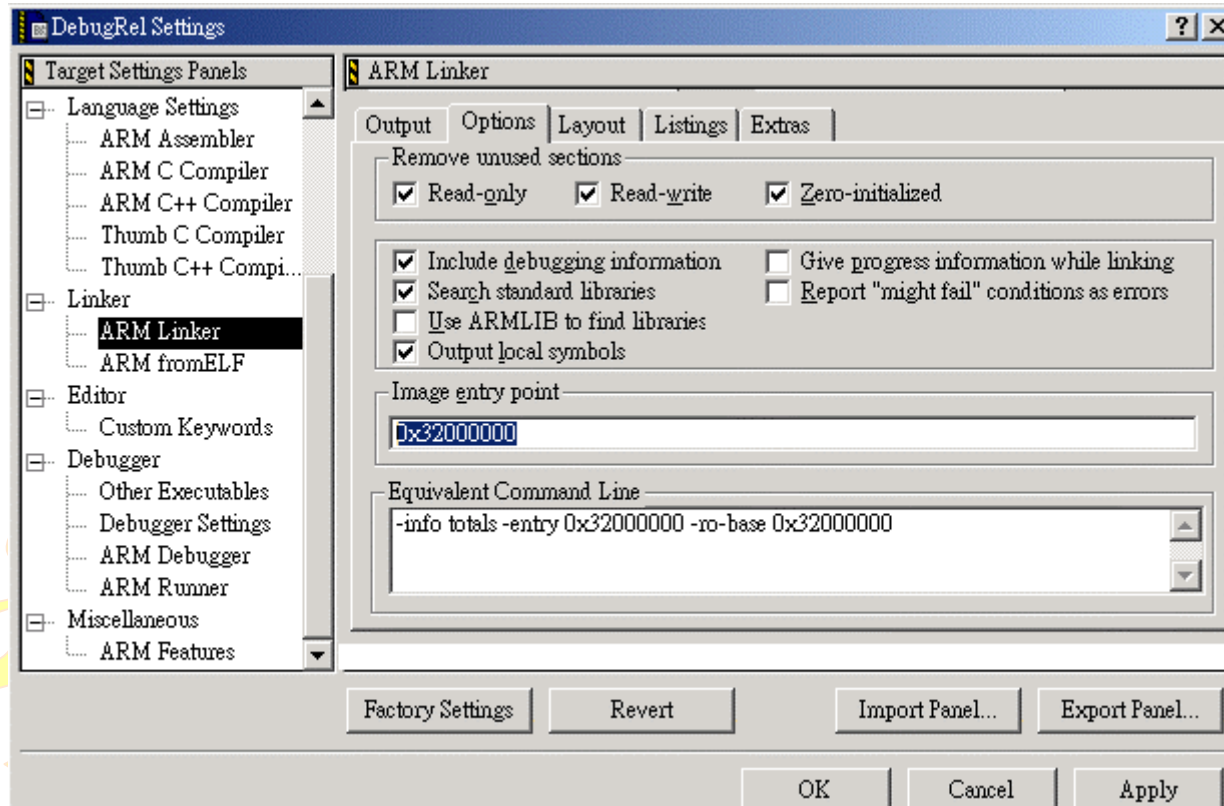


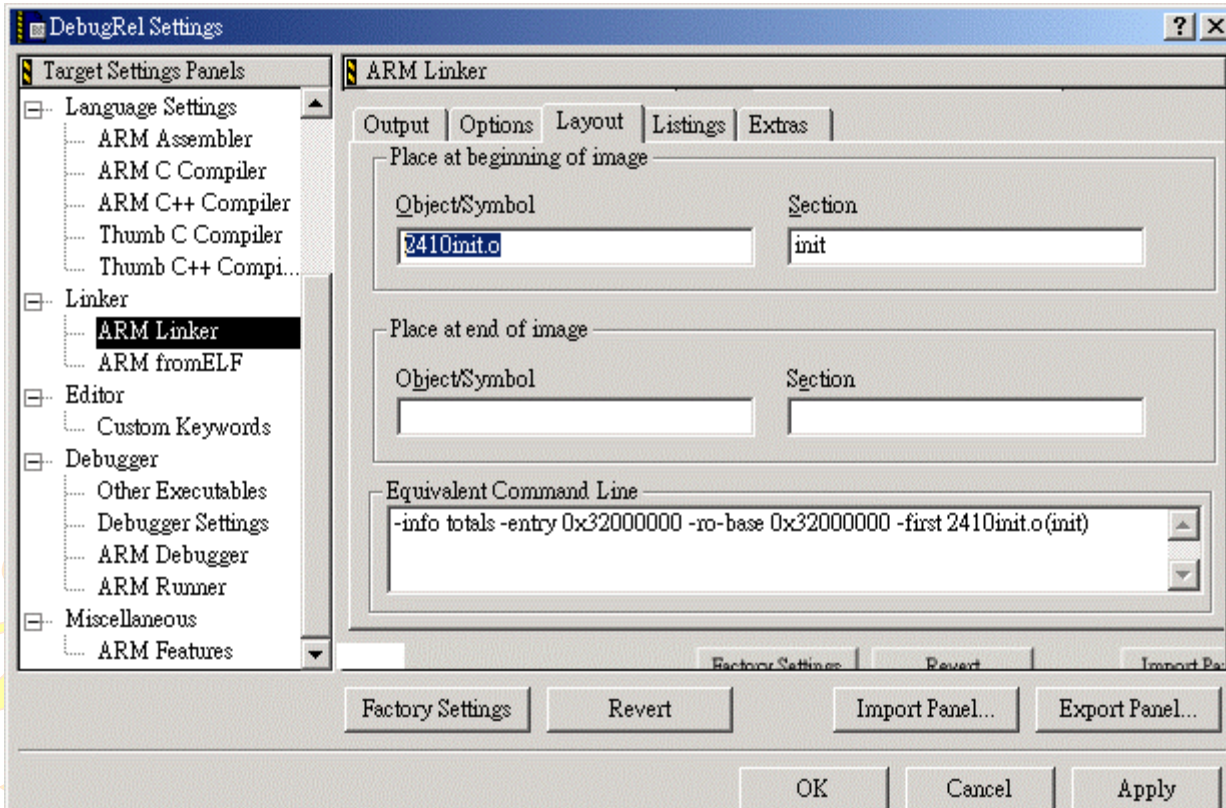


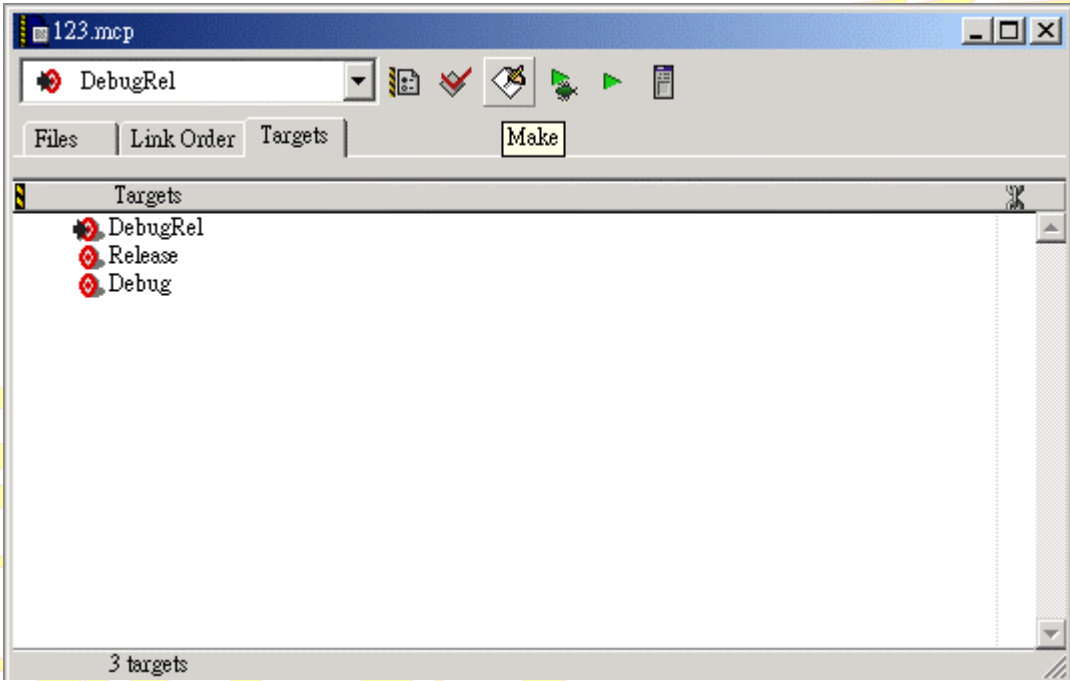








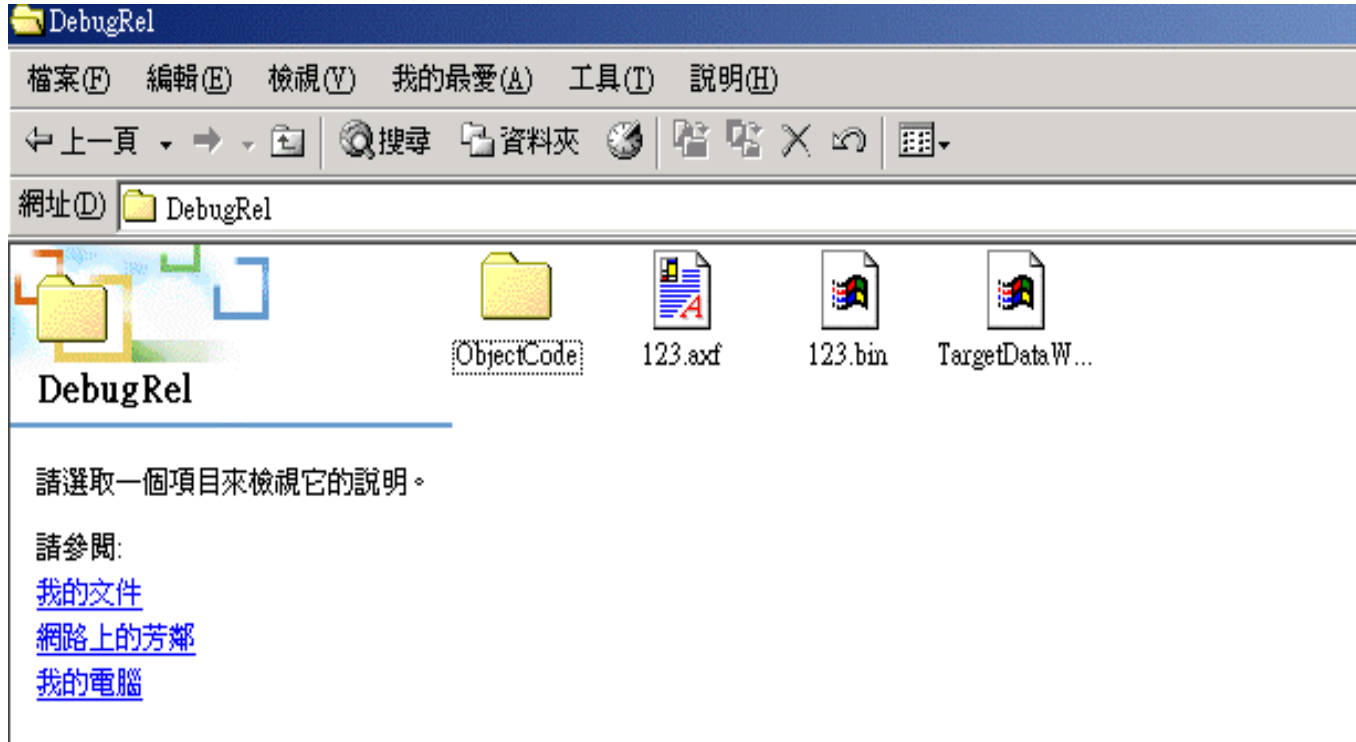




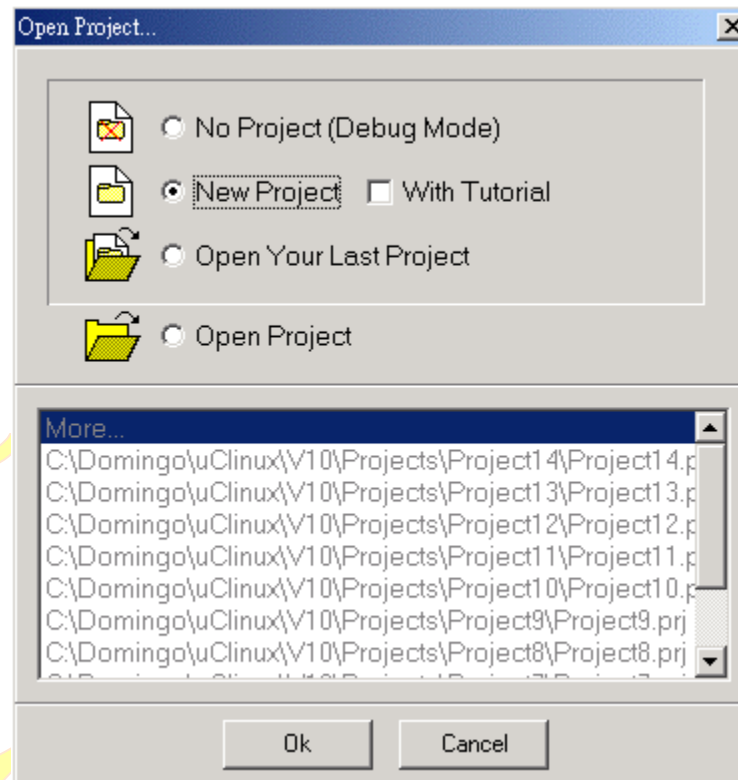
The screenshot shows a window titled "Errors & Warnings" with a toolbar at the top. The toolbar includes icons for a stop sign (0), a warning sign (0), and a speech bubble (14). The window title is "Errors and warnings for ?23.mcp".

Icon	Code	RO Data	RW Data	ZI Data	Debug	Object Totals
Speech bubble	768	18	0	4		5724
Speech bubble	0	0	0	0		0
Speech bubble	Library Totals					
Speech bubble	=====					
Speech bubble	Code	RO Data	RW Data	ZI Data	Debug	
Speech bubble	768	18	0	4		5724
Speech bubble	Grand Totals					
Speech bubble	=====					
Speech bubble	Total RO	Size(Code + RO Data)			786	(0.77kB)
Speech bubble	Total RW	Size(RW Data + ZI Data)			4	(0.00kB)
Speech bubble	Total ROM	Size(Code + RO Data + RW Data)			786	(0.77kB)
Speech bubble	=====					
Speech bubble	Translation to Plain binary format successful.					

At the bottom of the window, there is a toolbar with icons for a compiler, a debugger, a memory view, a file, and a lock, followed by a "Path:" field.



ATV



Hardware Options...

TargetMachine:
WINeZ (WIN2K) ARM

Processor:
S3C2410X

Project Setup

Parallel interface (print port)
378
 PC adapted SMC super I/O

Option
TIME OUT : 256 (DEC)

Memory Model
 Little Endian
 Big Endian

Clock Select
 RTCK
 ICE Clock 20 MHz

Peripheral Configuration Manager(PCM)
 To Initialize PCM when Connect Config PCM...

Coprocessor Option
Non-cacheable Memory Address(Reserved 8 bytes) : 31000000

Advanced Options
System Recovery Counts (6~255) : 15 (DEC)

Ok Cancel

